

Creative Learning



September 2012 –
August 2013 (issue 1)

Informal **courses** and **workshops** in the creative arts for everyone

Daytime and
evenings

Weekdays and
weekends

One day to 12
weeks

No
qualifications
necessary

From just £20



Visual art **Music** **Jewellery making** **Words** **Sculpture** **Crafts**
Art and music history **Dance** **Pottery** **Photography** **Drama**

t: 0116 252 2455 **www.**embracearts.co.uk

Embrace Arts
Lancaster Road
Leicester LE1 7HA

The University of Leicester's arts centre – open to all
Patron: The Rt Hon Lord Attenborough Kt CBE

Welcome to creative learning at Embrace Arts

This guide details the 93 courses and 36 workshops we are running between 1 September 2012 and 31 August 2013.

They are suitable for both established creatives looking to develop their talents and those wanting to learn new skills in an enjoyable way but without too much commitment. Disabled adults are particularly welcome and no formal qualifications are required.

Our learning programme is designed to fit with your life. The courses and workshops vary in length from one day to 12 weeks, and take place at different times of the day and in the evening, during the week and at weekends. Prices start from just £20.

Embrace Arts has been helping people to develop their creative talents for more than 15 years, providing high-quality teaching in a friendly, supportive atmosphere. Many of our experienced and enthusiastic tutors are practising artists themselves.

We would be pleased to advise on which courses and workshops would be best for you – and we'd also love to tell you about our special offers exclusive to Embrace Arts learners on our great programme of shows, concerts, exhibitions and family events throughout the year.

We will be adding more courses and workshops to run from April 2013. Details will be available by the end of February.

Richard Attenborough centre
Lancaster Road
Leicester LE1 7HA

t: 0116 252 2455

e: arts-centre@le.ac.uk

www.[embracearts.co.uk](http://www.embracearts.co.uk)

RNID Tynetalk service:

18001 0116 252 2455

Early bird prize draw

Book for any course or workshop before 31 August 2012 and you could win back your fee (conditions apply – please see www.embracearts.co.uk)

Every effort has been made to ensure all information is correct at the time of printing. However, we reserve the right to make amendments as necessary.

Contents

	Courses	Workshops
Visual art	4	21
Explore, create, connect	10	-
Sculpture and pottery	11	23
Art history	12	-
Jewellery making and crafts	14	23
Dance	15	-
Drama	17	-
Music and music history	18	24
Words and creative writing	20	-
Photography	-	25
Meet our tutors	26	
Course planner	30	
Workshop diary	32	
Booking form	33	
How to book	35	
How to find us	36	

Course information

The cost of basic materials is included in the price, unless otherwise stated.

You can book for any of these courses and workshops from **10am on Monday 16 July 2012** onwards. Full details on page 35.

Our thanks to all the learners, tutors and artists who kindly gave us permission to use images of their work and quote their comments.

Courses

Visual art

NEW

Abstract watercolour

Tuesdays, 1.30pm – 4pm

15 January – 19 February 2013

Tutor: Lois Gardner Sabet

£70 / £40 for 6 sessions

Work with the basics of colour theory, using watercolours to develop your own catalogue of expressive brush strokes and compositions leading to completed paintings.

RZ649



Kate Hodges

“a tremendously creative place”

Painting problems

Wednesdays, 10am – 3pm

Tutor: Jenny Wright

£120 / £60 for 6 sessions

For more experienced artists and beginners wishing to develop their skills and take risks.

Watery themes

3 October – 7 November

Reflections, pools, waves, splashes, ice – explore the theme of water in a variety of media using both abstract and representational approaches.

RZ609

Format and composition

13 February – 20 March 2013

An opportunity for artists and learners to look closely at the problems of composition and format when making paintings.

RZ650

The art of the landscape sketchbook

29 May – 3 July 2013

Produce sketchbooks and journals based on landscape as works of art in their own right, doing some of your studies in nearby Victoria Park.

RZ729

For a full description and further information:

www.embracearts.co.uk t: (0116) 252 2455 e: arts-centre@le.ac.uk

Art and ideas

Wednesdays, 10am – 12.30pm

Tutor: Peter Clayton

£55 / £30 for 5 sessions

For anyone wishing to learn new or expand their existing skills in a range of media and styles.

Telling tales

14 November – 12 December

Using words and stories as inspiration, learn to create pictures that spark the imagination and create atmosphere.

RZ610

Art and architecture

9 January – 6 February 2013

Explore various methods, media and ideas to discover how artists have depicted buildings and been inspired by architecture.

RZ651



Peter Clayton



Kay Lyne

A sense of place

Wednesdays, 1.30pm – 4.30pm

Tutor: Peter Clayton

£55 / £30 for 5 sessions

For anyone who would like to develop their skills working in a variety of styles, media and methods.

In the mood

14 November – 12 December

Learn how to create specific moods or atmosphere using the elements of colour, tone and technique.

RZ611

Taking a picture for a walk

9 January – 6 February 2013

Choose a theme or image and discover how, by changing the style or approach, you can alter the mood and meaning of your picture.

RZ652

Woodland

24 April – 22 May 2013

Create descriptive and imaginative responses to the subject of woodland, exploring themes of realism, abstraction and narrative.

RZ694

Life drawing

Wednesdays, 6.30pm – 8.30pm

Tutor: Diane E Hall

£60 / £35 for 5 sessions

Using a variety of approaches and media suggested by the tutor, these courses are suitable for artists with considerable experience, as well as newcomers to this area of art. Please note, all these life drawing courses feature an unclothed model and are therefore only open to those aged 16+.

Concave and convex shapes

3 – 31 October

Explore the fascinating contrasts in shape created as the figure crouches, curls up or rolls in a ball, confining some parts of the body and stretching and exposing others.

RZ612

The resting figure

13 February – 13 March 2013

An opportunity to look carefully and express creatively the proportions and form of the human body when the model is in a relaxed pose.

RZ653

Finding a focus

15 May – 12 June 2013

Focus on drawing parts of the body and exploring in detail the shapes created in a variety of stances.

RZ695

Problem and criticism

**Thursdays, 11am – 12.30pm
(fortnightly)**

Tutor: Diane E Hall

£50 / £25 for 6 sessions

Join with other artists to develop your critical skills and become more confident in your ability to develop your own style. These friendly, supportive sessions are devoted entirely to discussion and criticism of work done at home. The six sessions are based around a focus and specific creative problems set by the tutor. Learners will be required to work outside of the class using their own materials, resulting in a number of pieces using a variety of materials and approaches.

4 and 18 October; 1, 15 and 29

November; 13 December

RZ613

10 and 24 January; 7 and 21

February; 7 and 21 March 2013

RZ654

25 April; 9 and 23 May; 6 and 20

June; 4 July 2013

RZ696

“ great opportunity
to meet and
work with like-
minded people ”

Mixed media collage skills

Thursdays, 11am – 1pm

Tutor: Stephen Coley

£100 / £50 for 10 sessions

Acquire new skills and techniques in this exploration of the many alternative ways of creating collage artwork. An opportunity to experiment and create art in a friendly, non-pressured environment. For all levels of ability.

11 October – 13 December

RZ614

10 January – 14 March 2013

RZ655



Painting and drawing themes

Thursdays, 2pm – 4.30pm

Tutor: Anna Revill

£100 / £50 for 10 sessions

Expand your experience of the many possible approaches to painting and drawing as you explore a given theme. Suitable for beginners and the more experienced.

Hollows and volumes

11 October – 13 December

Hollows in the landscape, pears in a bowl or the fall of light on tumblers – a chance to examine how light and shadow fall on concave and convex surfaces.

RZ615

Organic forms

10 January – 14 March 2013

Investigate and interpret some of the natural forms that are found everywhere. Shells, stones, pods and feathers provide the starting point - sometimes juxtaposed with pots or patterns or pictures, and sometimes arranged singly.

RZ656

Landscape and composition

25 April – 27 June 2013

Focus on a variety of approaches, such as working with nearby subjects, distant views or angle of view, sometimes exploring several possibilities in a group of related images.

RZ697

NEW

Painting techniques of the masters

Fridays, 10am – 12pm
5 October – 7 December

Tutor: Geoff Beasley
£85 / £45 for 10 sessions

Find out about and try some of the traditional methods as used by old master painters such as Titian, Rubens, Rembrandt and Frans Hals. Suitable for anyone with basic drawing skills to the more advanced.

RZ616

NEW

Botanical drawing and painting

Fridays, 10am – 1pm
12 October – 23 November

Tutor: Georgia Danvers
£100 / £50 for 7 sessions

Build your understanding of how to draw and paint plant specimens as you learn and develop your skills in watercolour techniques and colour theory.

RZ617

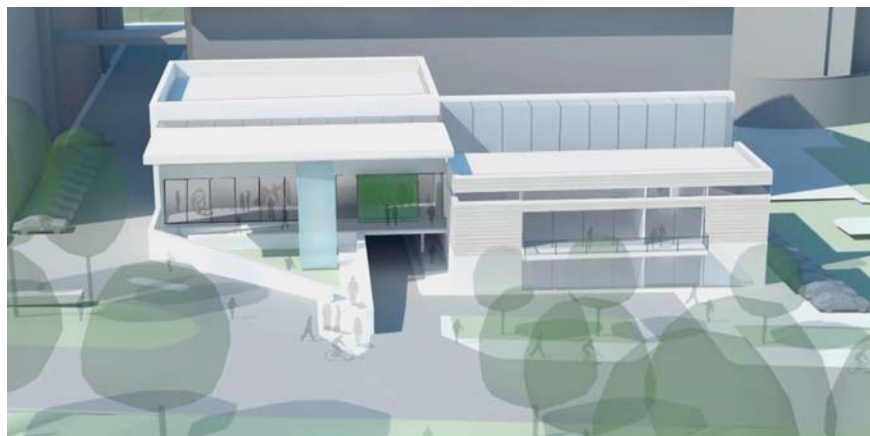
The £1.5 million new galleries appeal

Please help us extend our home at the Richard Attenborough centre to create a new wing for contemporary visual arts.

An innovative space accessible to all for sculpture, workshops and events.

Every £10 donated will attract a £7.50 match from Arts Council England!

To support the appeal or for more information, contact **Ave Vinick** at **0116 252 2176** or **arv4@le.ac.uk**.





NEW

Pastel drawing techniques

Fridays, 10am – 1pm

18 January – 22 March 2013

Tutor: Geoff Beasley

£128 / £65 for 10 sessions

Pastel drawing is a great way to explore and invent. Discover more about the possibilities and techniques as you develop your own skills in this fascinating medium.

RZ657



Scott Bridgwood

Aspects of life drawing

Fridays, 2pm – 4.30pm

Tutor: Scott Bridgwood

£128 / £65 for 10 sessions

Please note, these courses feature an unclothed model and are therefore only open to those aged 16+.

Life in colour

Learn about flesh tones, light colour and other issues and experiment with a variety of techniques and palettes to develop your skills and your own style for rendering the life figure in colour.

5 October – 7 December

RZ618

18 January – 22 March 2013

RZ658

The painted nude

10 May – 12 July 2013

With the emphasis more on creativity than draughtsmanship and anatomical detail, discover ways to experiment with and express yourself in paint.

RZ698

Life drawing for complete beginners

26 July – 27 September 2013

An opportunity for absolute beginners to life drawing to find out how to render the human figure accurately and confidently. Those who wish to improve their skills are also welcome for this mix of classwork and one-to-one tuition.

RZ727

Explore, create, connect



A more accessible and flexible approach to learning to suit you

- Open to all levels of experience
- Adults with a disability particularly welcome
- Pay as you go or book a number of sessions at once – it's up to you
- Cost per session: £8 (£4 concessions).



“friendly and helpful staff”



Adventures in art

Tuesdays, 10am – 12.30pm

Tutor: Caroline Throp

A broad course based on the theme of natural items, designed for those who wish to find ways into art. Visual images and objects will be provided to inspire a variety of approaches using all sorts of materials.

2 October – 4 December

RZ622

15 January – 19 March 2013

RZ662

23 April – 25 June 2013

RZ701

For a full description and further information:

www.embracearts.co.uk t: (0116) 252 2455 e: arts-centre@le.ac.uk

Sculpture and pottery



Pottery for all

Mondays, 10am – 12pm

Tutor: Rachel Barnett

£100 / £50 for 10 sessions

A relaxed and informal course for all abilities where you can be inspired and supported to be innovative with clay. Learn the basics or extend your knowledge further.

1 October – 10 December

(not 22 October)

RZ619

7 January – 18 March 2013

(not 11 February)

RZ659



Austin Orwin

For a full description and further information:

www.embracearts.co.uk

t: (0116) 252 2455

e: arts-centre@le.ac.uk

Experiments in sculpture

Tutor: Austin Orwin

£100 / £50 for 10 sessions

Develop ideas and experiment with form initially through drawing and maquette making, before scaling up to create a finished sculptural piece, learning a range of techniques along the way. Suitable for both beginners and those with previous experience looking to develop their practice.

You can choose to do this course on a Monday or Thursday, 6.30pm – 9pm.

1 October – 10 December

(not 22 October)

RZ620

4 October – 13 December

(not 25 October)

RZ621

7 January – 18 March 2013

(not 11 February)

RZ660

10 January – 21 March 2013

(not 14 February)

RZ661

15 April – 1 July 2013

(not 6 or 27 May)

RZ699

25 April – 4 July 2013

(not 30 May)

RZ700

Art history



Understanding art

Tuesdays, 2pm – 3.30pm

Tutor: Alan Caine

£65 / £35 for 10 sessions

Concentrating on the work of one artist each week, investigate why artists painted, what they wanted to say and how their work changed during their lives.

From Van Eyck to Bruegel

2 October – 4 December

Eight Netherlandish artists, including van der Weyden, Memling and Bosch.

RZ623

Eight French painters

15 January – 19 March 2013

From Claude to Chardin, including Poussin, de la Tour, Le Nain and Watteau.

RZ663



Exploring art

Wednesdays, 10.30am – 12pm

Tutors: Miriam Gill and guests

£65 / £35 for 10 sessions

East meets West

3 October – 5 December

Mutual fascination and artistic interchange characterise the relationship between East and West from classical times onwards. Discover more about these creative interactions in insular manuscripts, orientalism, japonisme and the arts of Byzantium and Russia.

RZ624

Vasari's Renaissance

9 January – 13 March 2013

Vasari's 'Lives of the Artists' is often called the first work of art history. Delve into his account of the Renaissance from Giotto to Michelangelo.

RZ664

Artists inspiring artists

24 April – 26 June 2013

Across the centuries artists have drawn inspiration from other's work. Whether their encounters took place in a workshop or a museum, they were inspired to emulate and surpass what they had seen.

RZ702

Art examined

Wednesdays, 1pm – 3pm

Tutors: Miriam Gill and guests
£40 / £25 for 5 sessions

Artists in their own words

3 – 31 October

Diaries, letters and even autobiographies preserve artists' reflections on their lives and work. This seminar-style class combines words and images to examine artists from Cellini to Van Gogh.

RZ625

Art and archaeology

9 January – 6 February 2013

Archaeology gives us a key to the artistic treasures of the ancient world. It reveals the context in which masterpieces were created and illuminates the roles they played in society and culture.

RZ665

Schemes and symbols

24 April – 22 May 2013

Many famous decorated interiors combine lavish works of art to create a unique web of meanings and associations. Explore significant schemes and their complex meanings from Westminster Abbey to Versailles.

RZ703

For a full description and further information:

www.embracearts.co.uk

t: (0116) 252 2455

e: arts-centre@le.ac.uk

History of art

Thursdays, 7.30pm – 9pm

Tutor: Alan Caine
£65 / £35 for 10 sessions

Portraits: From Roman rulers to Freud's children

4 October – 6 December

Discover how sculptures, drawings and paintings of all sorts reveal people and their personalities over the course of 2,000 years.

RZ626

Bruegel, Goya and Millet

10 January – 14 March 2013

Explore how each of these three diverse painters presents daily life and the human drama.

RZ666



Jewellery making and crafts



Silver jewellery for beginners

Mondays, 2pm – 4.30pm
14 January – 18 March 2013

Tutor: Kate Bajic
£120 / £80 for 10 sessions

An introduction to design techniques and methods for working in silver to create your own stunning, wearable pieces.

RZ667

NEW

Silver jewellery for improvers

Mondays, 2pm – 4.30pm
15 April – 17 June 2013

Tutor: Kate Bajic
£100 / £75 for 8 sessions

An opportunity to learn from a professional jeweller and develop a wide range of techniques for working in silver. (not 6 or 27 May)

RZ704



Kate Bajic



NEW

Papermaking and beyond

Tuesdays, 10am – 12.30pm
20 November – 18 December

Tutor: Joy Norman
£70 / £40 for 5 sessions

Discover how to create your own unique textured and patterned paper samples, using impressions, inlay, and a host of other embellishments.

RZ627

For a full description and further information:

www.embracearts.co.uk t: (0116) 252 2455 e: arts-centre@le.ac.uk

NEW

Create your own jewellery

Tuesdays, 6.30pm – 9pm

Tutor: Alex Williamson

£120 / £60 for 10 sessions

Learn how to design and make your own pieces of unique jewellery through a variety of techniques, including soldering, fusing, riveting, texturing, doming and the colouring of metal.

8 January – 12 March 2013

RZ668

7 May – 9 July 2013

RZ705

NEW

Blokey crochet

Wednesdays, 6pm – 9pm

20 February – 20 March 2013

Tutor: Georgie Park

£70 / £40 for 5 sessions

Calling men and women everywhere: prove that crochet is not just for girls. Learn all the stitches while crocheting beards, moustaches, footballs and more.

RZ669

“very inspiring”

Dance



NEW

Belly dancing for beginners

Monday evenings

Tutor: Hannah Myatt, £36 for 6 sessions

Learn the sensual flowing and rhythmic bumping hip motions of Raks Sharki (the proper name for belly dance) and discover how it uses the whole body. Originally practised by women to prepare the body for pregnancy and childbirth, this dance form tones the abdomen and lower back. Designed for complete beginners, this course taught by a professional belly dancer will really enhance your dancing skills.

1 October – 5 November

6.30pm – 7.30pm

RZ628

7 January – 11 February 2013

7.30pm – 8.30pm

RZ670

Hannah
Myatt



For a full description and further information:

www.embracearts.co.uk t: (0116) 252 2455 e: arts-centre@le.ac.uk

NEW

Burlesque for beginners

Monday evenings

Tutor: Hannah Myatt

£36 for 6 sessions

Feel like a million dollars as Hannah Myatt's alter ego Doe Demure helps you discover your cheeky, saucy side. Learn about styles of walking, posing, glove and stocking removal, the use of props and some fun routines as well. You will need opera gloves and stockings (this will be discussed at the first session) – bring your high heels.

12 November – 17 December

6.30pm – 7.30pm

RZ629

18 February – 25 March 2013

7.30pm – 8.30pm

RZ672

Contemporary dance for everyone

Tuesdays, 10am – 11am

Tutor: Rachel Farrer

£35 for 10 sessions

Improve your fitness and increase the flexibility of your body, working in a group to learn and perform movement to upbeat music. Suitable for adults of all ages. No previous dance experience is needed, just a positive attitude and some comfy clothes.

2 October – 4 December

RZ632

8 January – 12 March 2013

RZ674

23 April – 25 June 2013

RZ706

16 July – 17 September 2013

RZ707

NEW Hula hoop dance

Monday evenings Tutor: Hannah Myatt, £45 for 6 sessions

For beginners

This course covers all the basics, including hooping on the waist, before moving on to 'off body' tricks, hooping on different parts of the body and learning to dance with the hoop. Hula hoops provided.

1 October – 5 November

7.30pm – 8.30pm

RZ630

7 January – 11 February 2013

6.30pm – 7.30pm

RZ671

Intermediate

Move on from the beginner's course to tackle combinations and simple routines to link moves together, making your hooping much smoother and really taking your dancing to the next level. Hula hoops provided.

12 November – 17 December

7.30pm – 8.30pm

RZ631

18 February – 25 March 2013

6.30pm – 7.30pm

RZ673

Latin American dance

Tuesday evenings

Tutor: Maggie Munoz
£65 / £35 for 10 sessions

For beginners

6pm – 7.30pm

Get on your feet and have a go at this fun, energetic and exciting dance style. Improve your health, fitness and well-being. For adults interested in learning the basic skills, this informal course led by an experienced dance facilitator requires no specialist clothing or footwear.

2 October – 11 December

(not 30 October)

RZ633

8 January – 12 March 2013

RZ675

23 April – 25 June 2013

RZ708

Intermediate

7.45pm – 9.15pm

Enjoy Latin dance in its many forms and explore some of its more skilled aspects in styles such as salsa, merengue, cha cha cha, cumbia and reggaeton. This course is aimed at those with some experience of Latin American dance.

2 October – 11 December

(not 30 October)

RZ634

8 January – 12 March 2013

RZ676

23 April – 25 June 2013

RZ709

“fantastic
atmosphere”



Drama

Rehearsal for revolution

**Thursdays, 6pm – 8.30pm,
15 November – 13 December**

Tutor: Hannah Torrance,
£62 / £32 for 5 sessions

Explore the history and practice of forum theatre, a technique where the actors and audience play with ways to

solve a problem. Work together as a group to create your own piece around your chosen issue, finishing with a performance to an invited audience of family and friends. Ideal for anyone with an interest in practical drama and those studying theatre.

RZ730

For a full description and further information:

www.embracearts.co.uk t: (0116) 252 2455 e: arts-centre@le.ac.uk

Music



Singing for fun

Mondays, 1.30pm – 3.30pm

Tutor: John Gull

Enjoy being part of a friendly group where the emphasis is on having fun. Ideal for all ages, whether you already love to sing or want to find your voice. Explore a repertoire of songs in a wide variety of styles and traditions, including songs from the musicals, popular classics and folk songs. The singing is mainly in unison, with some simple part-singing, mainly learnt by ear, depending on the ability and number of participants. No musical knowledge necessary.

1 October – 17 December

£80 / £40 for 12 sessions

RZ635

7 January – 11 March 2013

£70 / £35 for 10 sessions

RZ677

15 April – 8 July 2013

(not 6 or 27 May)

£75 / £38 for 11 sessions

RZ710

For a full description and further information:

www.embracearts.co.uk

t: (0116) 252 2455

e: arts-centre@le.ac.uk

Jazz performance

Mondays, 7.15pm – 9.15pm

Tutor: Richard Everitt

£70 / £35 for 10 sessions

Gain confidence in your ability to improvise through a better understanding of scales, modes and chords. Develop individual and group performance skills. For anyone with an interest in jazz and a reasonable proficiency on a musical instrument. To take full part in all aspects of the course you will need to read music or chord symbols, but those who play by ear are also welcome.

15 October – 17 December

RZ636

7 January – 11 March 2013

RZ678

22 April – 8 July 2013

(not 6 or 27 May)

RZ711

Music history

Imagery and creative genius since 1900

Fridays, 1pm – 3pm

26 October – 14 December

Tutor: Deniz Ertan

£40 / £25 for 8 sessions

Develop your appreciation of Western music since 1900 and sharpen your listening skills through a rich cross-section of acoustic and digital repertoires in a friendly setting.

RZ731

Classical guitar

Wednesday evenings

Tutor: Yvonne Bloor

£58 for 10 or £150 for 30 sessions

Beginners

6.30pm – 7.30pm

Learn the basics of classical guitar playing in a friendly group setting with a strong emphasis on ensemble playing. No previous musical knowledge required but you will need to bring your own nylon-strung guitar, footstool and course book – please ask us for details. Suitable for beginners only.

3 October – 12 December

(not 24 October)

RZ637

9 January – 20 March 2013

(not 13 February)

RZ679

1 May – 10 July 2013

(not 29 May)

RZ712

Intermediate

7.30pm – 8.30pm

For anyone who wishes to explore a wider range of keys and musical styles and learn new repertoire in a friendly group setting. Suitable for those with approximately 2 years' playing experience who can already read music.

3 October – 12 December

(not 24 October)

RZ638

9 January – 20 March 2013

(not 13 February)

RZ688

1 May – 10 July 2013

(not 29 May)

RZ713

Experienced

8.30pm – 9.30pm

For players who want to extend their repertoire, improve their playing skills and study more challenging ensemble pieces. Suitable for those with 5+ years' experience.

3 October – 12 December

(not 24 October)

RZ639

9 January – 20 March 2013

(not 13 February)

RZ681

1 May – 10 July 2013

(not 29 May)

RZ714

“ puts me in the right place to be creative ”

We recommend that you take beginner or intermediate level classical guitar for 30 weeks before moving on to the next level.



Words and creative writing



Creative writing for beginners

Tuesdays, 10am – 12pm
15 January – 19 February 2013

Tutor: Katie Sone
£40 / £20 for 6 sessions

A series of fun sessions designed to bring out the creative writer in you. With a focus on short writing exercises to explore different styles of writing, themes, descriptions and ideas for future development.

RZ682

For a full description and further information:

www.embracearts.co.uk

t: (0116) 252 2455

e: arts-centre@le.ac.uk

Reading and thinking

Tuesdays, 7pm – 9pm

Tutor: Richard Gill
£65 / £35 for 10 sessions

Henry James

2 October – 11 December

Appreciate the artistry, creation of character and moral dimensions of Henry James, regarded as the first of the modern novelists, through an examination of his major novel 'Portrait of a Lady' and his short stories.

(not 6 November)

RZ640

Modern Irish novels

8 January – 19 March 2013

Three preoccupations of modern Irish fiction – the experimental, the problems of contemporary history, and the Irish countryside – explored in works by Flann O'Brien, Colm Toibin and John McGahern.

(not 19 February)

RZ683

Shakespeare's contemporaries

23 April – 2 July 2013

The work of Marlowe, Johnson, Middleton, Webster and Ford is exciting, inventive and sometimes shocking. Discover how their plays still live on the page and stage.

(not 28 May)

RZ715

Workshops



Visual art

Life drawing on Saturdays

All 10am – 3.30pm

£40 / £22

Explore the exciting potential of life drawing in these full-day workshops using a variety of approaches and media.

Sorry, our life drawing courses are only open to those aged 16+ years as they feature an unclothed model.

For absolute beginners

Tutor: Scott Bridgwood

For newcomers wishing to create a convincing life drawing. Designed to give participants the know-how and confidence to render the human form using a variety of media and one-to-one teaching.

15 September

RZ603

23 February 2013

RZ684



Scott Bridgwood

Tone and form

Tutor: Diane E Hall

Learn to observe carefully and appreciate proportion, tone and form. Beginners and experienced artists are welcome as individual interpretation is encouraged.

27 October

RZ641

26 January 2013

RZ685

23 March 2013

RZ716

Masterclass

Tutor: Scott Bridgwood

Push the boundaries of life drawing to produce expressive works of art. For those who wish to take their skills on to the next level.

24 November

RZ648

20 April 2013

RZ717

“great centre
for the arts”

For a full description and further information:

www.embracearts.co.uk

t: (0116) 252 2455

e: arts-centre@le.ac.uk

Portraiture

Saturdays, 10am – 3.30pm

Tutor: Scott Bridgwood, £40 / £22

Gain a better insight into the making of a portrait in these one-day workshops. Study and draw from a live model in innovative ways, and use tried and tested methods to learn how to look at and depict the portrait step by step. Suitable for all levels of ability.

6 October

RZ642

6 July 2013

RZ718

Drawing and painting in the Botanic Garden

Monday 19 – Wednesday 21 August 2013, 10am – 3.30pm daily

Tutor: Diane E Hall, £95 / £50

Experiment over three days with different approaches and materials to develop initial ideas and exploratory drawings, inspired by the University of Leicester's Botanic Garden, into a final painting or mixed media work in the on-site studio in Oadby. This popular course coincides with the University's 2013 Sculpture in the Garden exhibition.

RZ719



Creative development

NEW

Marketing yourself – for visual artists with a hearing loss

Saturday 16 March 2013, 10am – 2pm

Tutors: Dan Lamoon and Charlotte Chapman, £50 (no concessions)

Designed to enable visual artists with a hearing loss to overcome communication barriers and learn how to showcase their work in a D/deaf-aware environment and in their preferred communication mode.

Covers invaluable marketing skills, including building your portfolio, establishing your brand and developing a logo.

With British Sign Language interpretation



RZ693

“like nowhere else in Leicester”

Sculpture

NEW

Abstract sculpture

Saturdays, 10am – 4pm

Tutor: Penny Davis

£40 / £22 or £100 / £50 for all three

Develop a drawing into a small sculpture that reflects your own personal expression, making technical decisions and using a variety of techniques appropriate to the chosen medium to transfer your ideas into 3D. Includes demonstrations and examples from contemporary artists and the tutor's own work.

Wire and thread

12 January 2013

RZ686

Paper mache

16 February 2013

RZ687

Plaster

16 March 2013

RZ720



Jewellery making and crafts

Working in silver

Saturdays, 10am – 3.30pm

Tutor: Kate Bajic, £60 / £40

An opportunity to make your own pieces and learn techniques including soldering, forming, sawing, hammering, drilling, doming and filing. Suitable for both beginners and improvers.



Kate Bajic

Earrings and cufflinks

8 September

RZ605

1 June 2013

RZ721

Rings

22 September

RZ606

Pendants, brooches and pins

13 October

RZ643

Bangles and bracelets

11 May 2013

RZ722

Creative jewellery weekend

**Saturdays and Sundays,
10am – 5pm**

Tutor: Betty Ching
£120 / £65

Immerse yourself in two days of designing and making your own unique and creative jewellery projects. A variety of techniques will be demonstrated for you then to try out yourself, including wire wrapping and using metal components and tools.

9 and 10 February 2013
RZ688

31 August and 1 September 2013
RZ728

Inspirational batik

Saturdays, 10am – 3.30pm

Tutor: Andrew Wynne
£40 / £22

Explore innovative approaches to this ancient textile technique in this practical workshop. Adopt an experimental approach to free up and develop your ideas, applying the batik processes with an element of spontaneity.

1 September
RZ608

2 March 2013
RZ732

“ I love this place ”

Trash to treasure

Saturdays, 10am – 4pm

Tutor: Rachel Grevatte
£40 / £22

Discover how to re-use and recycle papers and fabrics to make your own creations and distinctive gifts that will wow your family and friends.

Festive gift wrap, boxes and bows

1 December
RZ645

Vintage-inspired posies
2 February 2013
RZ689

Quirky clutch bags
16 March 2013
RZ733

Music

Everyone can sing

**Saturday 8 and Sunday 9
December, 10am – 5pm**

Tutor: Dan Evans, £50 / £30

Have lots of fun finding your voice – and your confidence – in this enjoyable and highly-participatory weekend. Learn how to listen carefully, breathe effectively and project your voice to make songs come to life. For all levels, from those who have been called “tone deaf” to professional singers of any genre.
RZ644

Photography

Understanding your digital camera

Saturdays, 10am – 4pm

Tutor: Robert Hall

£40 / £22 for a single session
or £35 / £18 each for 3 or more

A series of one-day practical workshops to help you better understand the controls of your digital camera and further develop your photography skills:

Know your digital camera

20 October

RZ646

Develop your camera skills

17 November

RZ647

Exploring the exposure controls

26 January 2013

RZ690

Exploring the shooting controls

23 February 2013

RZ691

Out and about

23 March 2013

Go out and take photographs and then evaluate the images back in the studio using a digital projector.

RZ692



Robert
Hall

Exploring photography

Saturdays, 10am – 1pm

Tutor: Robert Hall

£40 / £22 or £35 / £18 each
for 3 or more

For creative photographers who want to investigate new avenues and ways of looking. In the two sessions for each topic, you will examine the work of established photographers, do individual project work and discuss each other's work as a group.

Line, shape and repetition

13 and 27 April 2013

RZ723

Hue and colour saturation

4 and 18 May 2013

RZ724

Street photography

8 and 22 June 2013

RZ725

Practical landscapes

Tuesday 16 and Wednesday

17 July 2013, 10am – 3.30pm

Tutor: Robert Hall

£60 / £30

Ideal for anyone who enjoys landscape photography but is often disappointed with the results. The two days combines practical sessions at Watermead Country Park and the University of Leicester's Botanic Garden in Oadby with evaluation back in the studio of the images taken.

RZ726



Meet our tutors

Thank you to all those tutors who provided biographical details to help people select their courses and workshops.

Kate Bajic is a professional jeweller who exhibits her work in galleries and exhibitions nationwide. She also teaches across the East Midlands, giving beginners and improves the opportunity to create beautiful silver jewellery.

www.katebajic.co.uk



Rachel Barnett has been teaching pottery for more than 15 years and has a degree in ceramics and a Post-Graduate Certificate in Education. Her classes attract a range of learners, from complete beginners to hobby ceramicists, who enjoy making a range of pieces both functional and abstract. Her other commitments include after-school clay clubs and creative art classes in the mental health sector.



Geoffrey Beasley studied at Ravensbourne College of Art and Design and The Royal Academy Schools, London, and



gained an MA in fine art at Nottingham Trent University in 1993. An experienced teacher and professional artist, he is a part-time artist in residence at Rockingham School in Northamptonshire.

Yvonne Bloor is a well-established teacher and performer of the classical guitar. She regularly plays in concerts and teaches a wide range of students of all ages. Her courses at Embrace Arts are designed to be informative and friendly with a strong emphasis on group playing.

www.yvonnebloor.com



Scott Bridgwood is a figurative artist who graduated from Chelsea College of Art & Design in 1991. He has exhibited in London and Rome where he also taught at the British Cultural Institute. He has sold widely and won various prestigious awards. A former chair of Leicester Society of Artists, he teaches at various venues across Leicestershire.

www.scottbridgwood.daportfolio.com

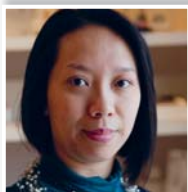


Alan Caine is a teacher and painter. One of the founders of the Richard Attenborough centre (where Embrace Arts is housed), he was responsible for the University of Leicester's adult education programme for 30 years.



“the tutor
knew the
subject so well”

Betty Ching makes creative fashion jewellery influenced by her background in textile design and her fascination for body movement. Her interest in passing on her skills through jewellery workshops has also led her to develop a range of jewellery-making kits. www.bettyching.co.uk



Peter Clayton graduated in fine art in 1981. He has shown in some 150 solo and group exhibitions around the UK, and his work is in private and public collections worldwide. Commissions and residences include P&O Cruises, Faber & Faber, Grizedale Forest in Cumbria, and Buckinghamshire Museum and Art Gallery. He has taught at Embrace Arts since 1998. www.peterclayton.org



Stephen Coley is a fine art graduate and co-founder and active member of the visual arts organisation Artblock. A practising artist, he has exhibited throughout the UK. His main areas of work revolve around organic sculptures, using metals or plastics, and mixed media collages incorporating drawing, painting, tissue and photography. www.stephen-coley.com



Georgia Danvers is a trained botanical artist who has exhibited throughout the UK, including three prestigious exhibitions



held by the Society of Botanical Artists in London. She is also a published artist and currently teaches courses in botanical drawing and painting for beginners through to diploma level.

Penny Davis is a professional artist whose work has been exhibited and is held in collections both nationally and internationally, including Italy and the USA. She is currently completing a practice-based PhD in sculpture at the University of Gloucestershire. Holder of a PGCE in further education, she has taught all ages in a variety of contexts, including at the former City Gallery and for the Mighty Creatives in Leicester. www.pennydavis.com

Deniz Ertan is a music historian and a published author, who has taught at Manchester and Nottingham universities. She has received awards and fellowships from a number of institutions, including the Leverhulme Trust and the Society for American Music. She is also a classical guitarist, a keen djembe player and a clinical reflexologist.

Dan Evans was told as a child that he couldn't sing and was made to mime in the school choir. In adult life he attended a number of voice workshops which transformed his musical career. He now performs professionally in the UK and USA singing with dulcimer and guitar.

Rachel Farrer has performed internationally as a dancer, working with a variety of acclaimed choreographers. She currently lectures at De Montfort University as well as teaching in community settings around the Midlands, with participants ranging from young to old, professional to novice.

Lois Gardner Sabet is a fine art graduate who has been working for many years as an abstract painter using pattern, colour and rhythm in her large watercolours. She



has exhibited and sold works internationally and taught in residential courses in the UK and France. She is dedicated to helping people find their own form of expression with paint and gain complete confidence in using colour.

www.lois-gardner-sabet.co.uk

Miriam Gill has a lifelong fascination with visual art. Her studies at Oxford and The Courtauld Institute of Art focused on the Middle Ages, but she has a wide-ranging interest in different periods and artists and the connections between them.

Richard Gill has taught at Embrace Arts for many years. He has written books on Marlowe, Shakespeare, Donne, Jane Austen, Tennyson and Yeats, and has taught for over 30 years at Wyggeston and Queen Elizabeth I College, as well as at Vaughan College and the Workers' Educational Association. He has also worked in radio and television.



Rachel Grevatte

transforms old, broken and discarded materials to create accessories, mosaics and other pieces, selling to commission, through local galleries and online. She studied art and qualified as a teacher at Bretton Hall, Leeds University. She has extensive experience in developing learning programmes and teaching in schools, museums and galleries.

www.emilyfoundathing.co.uk



John Gull is a professional vocal coach with 20 years' experience and a diverse background in choral music, from cathedral choirs to



barbershop choruses. He aims to enthuse learners to enjoy singing with others in a friendly and relaxed atmosphere.

www.johngull.co.uk

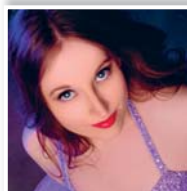
Diane E Hall is a practising artist who worked in disability education for 25 years before becoming a tutor at Embrace Arts in 2000. Her courses are stimulating and inspired by creative ideas and knowledge of art history and current practice. She uses a variety of approaches to learning, interpretation and engagement with art, and aims to encourage creative experience and provide an opportunity for learners to develop new skills and to evaluate and assess their own work. www.g8artists.co.uk.

Robert Hall is a practising art photographer with a degree in visual communications. He has exhibited his images around the country, gaining several prizes. He has run courses on digital photography and image manipulation for the last ten years and is a founder member of Photoimage21 and co-ordinator of the digital imaging group in Leicester U3A.

www.photographics2000.co.uk



Hannah Myatt is an experienced Oriental belly dancer and has danced professionally for Chaines Dance Company since 2009. Under her performance name, Doe Demure, she also performs burlesque and hula hoop styles. Hannah hopes that her classes help students to feel confident and comfortable in their own skin. www.doedemure.co.uk



Joy Norman is a mixed-media artist who has been working for many years with handmade paper pulp, textiles, organic items and found objects. She creates one-off pieces of framed work, wall hangings and decorative bowls, and

has exhibited widely throughout the East Midlands. She is a member of the Design Factory and the Tesserae Textile Group.
www.joynorman.co.uk

Austin Orwin is a professional sculptor who exhibits his work regularly and also works to commission. He has been teaching at Embrace Arts for some seven years. His courses offer a very supportive environment where individual ideas can be explored and learners with a mix of experience can push the boundaries of their work.



Katie Sone has worked in the arts and cultural sector in Leicester for over 10 years and is an experienced arts project manager and committed writer. She is currently writing a series of children's books and short stories.

Hannah Torrance trained in applied theatre at Central School of Speech & Drama and specialises in youth and community theatre. She has worked with companies such as the Young Vic Theatre and MIND, as well as running workshops in art and drama for children and young people.



Alex Williamson studied for a textiles degree at Loughborough University and an HNC in jewellery and 3D design at Leicester College. She has taught jewellery evening classes at Embrace Arts for the past three years, in addition to being an independent designer maker. She is currently studying for a PGCE.
www.alexwilliamson.com



Jenny Wright is a professional artist and exhibits as Jenny Grevatte. She has had many solo shows nationally and internationally. Her most recent exhibition took place simultaneously at New Walk Museum & Art Gallery and Embrace Arts in 2010. She has work in many public collections and has taught at Embrace Arts for 28 years.
www.jennygrevatte.co.uk



Andrew Wynne is a freelance visual artist, designing and creating contemporary wall-hung work to commission and for exhibition. His practice includes teaching in adult education, school residencies with learners ranging from reception year through to sixth form, community settings with art and craft groups, day centres for people with learning disabilities and elderly people's homes. He likes to work by freely experimenting with the medium, working mostly with resist and discharge-dyed textiles, print and mosaic.
www.andrewwynne.co.uk



	Course planner Sept 2012 - Aug 2013		Tutor	Times
Visual art / Explore, create, connect	Tuesdays	Abstract watercolour	Lois Gardner Sabet	1.30pm – 4pm
	Wednesdays	Painting problems	Jenny Wright	10am – 3pm
		Art and ideas	Peter Clayton	10am – 12.30pm
		A sense of place	Peter Clayton	1.30pm – 4.30pm
		Life drawing	Diane E Hall	6.30pm – 8.30pm
	Thursdays	Problem and criticism	Diane E Hall	11am – 12.30pm
		Mixed media collage skills	Stephen Coley	11am – 1pm
		Painting and drawing themes	Anna Revill	2pm – 4.30pm
	Fridays	Painting techniques of the masters	Geoff Beasley	10am – 12pm
		Botanical drawing and painting	Georgia Danvers	10am – 1pm
		Pastel drawing techniques	Geoff Beasley	10am – 1pm
		Aspects of life drawing	Scott Bridgwood	2pm – 4.30pm
Tuesdays	Adventures in art	Caroline Throp	10am – 12.30pm	
Sculpture	Mondays	Pottery for all	Rachel Barnett	10am – 12pm
		Experiments in sculpture	Austin Orwin	6.30pm – 9pm
	Thursdays	Experiments in sculpture	Austin Orwin	6.30pm – 9pm
Art history	Tuesdays	Understanding art	Alan Caine	2pm – 3.30pm
	Wednesdays	Exploring art	Miriam Gill etc	10.30am – 12pm
		Art examined	Miriam Gill etc	1pm – 3pm
	Thursdays	History of art	Alan Caine	7.30pm – 9pm
Jewellery making and crafts	Mondays	Silver jewellery for beginners	Kate Bajic	2pm – 4.30pm
		Silver jewellery for improvers	Kate Bajic	2pm – 4.30pm
	Tuesdays	Papermaking and beyond	Joy Norman	10am – 12.30pm
		Create your own jewellery	Alex Williamson	6.30pm – 9pm
	Wednesdays	Blokey crochet	Georgie Park	6pm – 9pm
Dance	Mondays	Belly dancing for beginners	Hannah Myatt	6.30pm – 7.30pm 7.30pm – 8.30pm
		Burlesque for beginners	Hannah Myatt	6.30pm – 7.30pm 7.30pm – 8.30pm
		Hula hoop dance: For beginners	Hannah Myatt	7.30pm – 8.30pm 6.30pm – 7.30pm
		Hula hoop dance: Intermediate	Hannah Myatt	7.30pm – 8.30pm 6.30pm – 7.30pm
	Tuesdays	Contemporary dance for everyone	Rachel Farrer	10am – 11am
		Latin American dance: For beginners	Maggie Munoz	6pm – 7.30pm
		Latin American dance: Intermediate	Maggie Munoz	7.45pm – 9.15pm
Drama	Thursdays	Rehearsal for revolution	Hannah Torrance	6pm – 8.30pm
Music	Mondays	Singing for fun	John Gull	1.30pm – 3.30pm
		Jazz performance	Richard Everitt	7.15pm – 9.15pm
	Wednesdays	Classical guitar: Beginners	Yvonne Bloor	6.30pm – 7.30pm
		Classical guitar: Intermediate	Yvonne Bloor	7.30pm – 8.30pm
		Classical guitar: Experienced	Yvonne Bloor	8.30pm – 9.30pm
	Fridays	Music history: Imagery and creative genius since 1900	Deniz Ertan	1pm – 3pm
Words	Tuesdays	Creative writing for beginners	Katie Sone	10am – 12pm
		Reading and thinking	Richard Gill	7pm – 9pm

Dates	Page
15 Jan – 19 Feb	4
3 Oct – 7 Nov, 13 Feb – 20 Mar and 29 May – 3 July	4
14 Nov – 12 Dec and 9 Jan – 6 Feb	5
14 Nov – 12 Dec, 9 Jan – 6 Feb and 24 Apr – 22 May	5
3 – 31 Oct, 13 Feb – 13 Mar and 15 May – 12 June	6
4 Oct – 13 Dec, 10 Jan – 21 Mar and 25 Apr – 4 July (fortnightly)	6
11 Oct – 13 Dec and 10 Jan – 14 Mar	7
11 Oct – 13 Dec, 10 Jan – 14 Mar and 25 Apr – 27 June	7
5 Oct – 7 Dec	8
12 Oct – 23 Nov	8
18 Jan – 22 Mar	9
5 Oct – 7 Dec, 18 Jan – 22 Mar, 10 May – 12 July and 26 July – 27 Sept	9
2 Oct – 4 Dec, 15 Jan – 19 Mar and 23 Apr – 25 Jun	10
1 Oct – 10 Dec (not 22 Oct) and 7 Jan – 18 Mar (not 11 Feb)	11
1 Oct – 10 Dec (not 22 Oct), 7 Jan – 18 Mar (not 11 Feb) and 15 Apr – 1 July (not 6 or 27 May)	11
4 Oct – 13 Dec (not 25 Oct), 10 Jan – 21 Mar (not 14 Feb) and 25 Apr – 4 July (not 30 May)	11
2 Oct – 4 Dec and 15 Jan – 19 Mar	12
3 Oct – 5 Dec, 9 Jan – 13 Mar and 24 Apr – 26 June	12
3 – 31 Oct, 9 Jan – 6 Feb and 24 Apr – 22 May	13
4 Oct – 6 Dec and 10 Jan – 14 Mar	13
14 Jan – 18 Mar	14
15 Apr – 17 June (not 6 or 27 May)	14
20 Nov – 18 Dec	14
8 Jan – 12 Mar and 7 May – 9 July	15
20 Feb – 20 Mar	15
1 Oct – 5 Nov	15
7 Jan – 11 Feb	
12 Nov – 17 Dec	16
18 Feb – 25 Mar	
1 Oct – 5 Nov	16
7 Jan – 11 Feb	
12 Nov – 17 Dec	16
18 Feb – 25 Mar	
2 Oct – 4 Dec, 8 Jan – 12 Mar, 23 Apr – 25 Jun and 16 July – 17 Sept	16
2 Oct – 11 Dec (not 30 Oct), 8 Jan – 12 Mar and 23 Apr – 25 June	17
2 Oct – 11 Dec (not 30 Oct), 8 Jan – 12 Mar and 23 Apr – 25 June	17
15 Nov – 13 Dec	17
1 Oct – 17 Dec, 7 Jan – 11 Mar, 15 Apr – 8 July (not 6 or 27 May)	18
15 Oct – 17 Dec, 7 Jan – 11 Mar and 22 Apr – 8 July (not 6 or 27 May)	18
3 Oct – 12 Dec (not 24 Oct), 9 Jan – 20 Mar (not 13 Feb) and 1 May – 10 July (not 29 May)	19
3 Oct – 12 Dec (not 24 Oct), 9 Jan – 20 Mar (not 13 Feb) and 1 May – 10 July (not 29 May)	19
3 Oct – 12 Dec (not 24 Oct), 9 Jan – 20 Mar (not 13 Feb) and 1 May – 10 July (not 29 May)	19
26 Oct – 14 Dec	18
15 Jan – 19 Feb	20
2 Oct – 11 Dec (not 6 Nov), 8 Jan – 19 Mar (not 19 Feb) and 23 Apr – 2 July (not 28 May)	20

Workshop diary Sept 2012 – Aug 2013

			Tutor	Dates	Times
Visual art	Saturdays	Life drawing: For absolute beginners	Scott Bridgwood	15 Sept; 23 Feb	10am - 3.30pm
		Portraiture	Scott Bridgwood	6 Oct; 6 July	10am - 3.30pm
		Life drawing: Tone and form	Diane E Hall	27 Oct; 26 Jan; 23 Mar	10am - 3.30pm
		Life drawing: Masterclass	Scott Bridgwood	24 Nov; 20 April	10am - 3.30pm
	Saturdays	Marketing yourself – for visual artists with a hearing loss	Dan Lamoon and Charlotte Chapman	16 March	10am - 2pm
	Mon – Weds	Drawing and painting in the Botanic Garden	Diane E Hall	19 – 21 Aug	10am - 3.30pm
Sculpture	Saturdays	Abstract sculpture: Wire and thread	Penny Worthy	12 Jan	10am - 4pm
		Abstract sculpture: Paper mache	Penny Worthy	16 Feb	10am - 4pm
		Abstract sculpture: Plaster	Penny Worthy	16 Mar	10am - 4pm
Jewellery making and crafts	Saturdays	Working in silver: Earrings and cufflinks	Kate Bajic	8 Sept; 1 June	10am - 3.30pm
		Working in silver: Rings	Kate Bajic	22 Sept	10am - 3.30pm
		Working in silver: Pendants, brooches and pins	Kate Bajic	13 Oct	10am - 3.30pm
		Working in silver: Bangles and bracelets	Kate Bajic	11 May	10am - 3.30pm
	Sat – Sun	Creative jewellery weekend	Betty Ching	9 – 10 Feb; 31 Aug – 1 Sept 2013	10am - 5pm
	Saturdays	Inspirational batik	Andrew Wynne	1 Sept; 2 Mar	10am - 3.30pm
		Trash to treasure: Gift wrap, boxes and bows	Rachel Grevatte	1 Dec	10am - 4pm
		Trash to treasure: Vintage-inspired posies	Rachel Grevatte	2 Feb	10am - 4pm
		Trash to treasure: Quirky clutch bags	Rachel Grevatte	16 March	10am - 4pm
Music	Sat – Sun	Everyone can sing	Dan Evans	8 – 9 Dec	10am - 5pm
Photography	Saturdays	Know your digital camera	Robert Hall	20 Oct	10am - 4pm
		Develop your camera skills	Robert Hall	17 Nov	10am - 4pm
		Exploring the exposure controls	Robert Hall	26 Jan	10am - 4pm
		Exploring the shooting controls	Robert Hall	23 Feb	10am - 4pm
		Out and about	Robert Hall	23 March	10am - 4pm
		Line, shape and repetition	Robert Hall	13 and 27 April	10am - 1pm
		Hue and colour saturation	Robert Hall	4 and 18 May	10am - 1pm
		Street photography	Robert Hall	8 and 22 June	10am - 1pm
		Practical landscapes	Robert Hall	16 and 17 July	10am - 3.30pm

Booking form

Please return to: Creative Learning Bookings, Embrace Arts, Richard Attenborough centre, PO Box 138, Lancaster Road, Leicester LE1 7HA.

First name Surname

Address

Postcode Date of birth

DAY			MONTH			YEAR		

Telephone Mobile

e-mail

Please enrol me on the following courses / workshops:

Code eg RZXXX	Title	Fee
.....
.....
.....
.....
.....

Full fee ☐ Concession ☐ (please tick) **TOTAL**

I wish to pay by:

Cash ☐ Cheque (payable to 'University of Leicester') ☐ Credit/debit card ☐

Card no.

--	--	--	--

--	--	--	--

--	--	--	--

--	--	--	--

MasterCard ☐ Visa ☐ Maestro/debit ☐ Switch ☐

Expiry date

--	--	--	--

Please note, your credit card details will be destroyed once your booking is complete

Please turn over...

If you are claiming a concession, please state benefit claimed (see 'How to book' for a list of allowable concessions):

.....

Proof of benefit must be shown – photocopy enclosed ☐

Please give details of someone we can contact in case of emergency:

Name

Telephone Relationship

Do you have a disability, condition or allergy we should be aware of?

Yes ☐ No ☐

If 'yes' please give us details below or contact us to discuss specific requirements or in-class support:

.....

.....

Tick here if you would like blue badge car parking ☐

How did you hear about us?

OFFICE USE ONLY	Learner ID No.....
Receipt No.	Date paid.....
Receipt No.	Date paid.....
Receipt No.	Date paid.....

Applicants should note that the University reserves the right to make, without notice, changes in regulations, courses, workshops, fees, etc, at any time before or after a candidate's admission. Admission to the University is subject to the requirement that the candidate will comply with the University's registration procedure and will duly observe the Charter, Statutes, Ordinances and Regulations.

How to book

✉ **Post** your completed booking form (on pages 33 – 34 or download one at www.embracearts.co.uk) with a cheque made payable to 'University of Leicester' to: Creative Learning Bookings, Embrace Arts, Richard Attenborough centre, PO Box 138, Leicester LE1 7HA.

📞 **Call us** on 0116 252 2455 and pay by debit/credit card.

💵 **Pop in to see us** and pay over the counter (Lancaster Road, LE1 7HA).

🕒 **Box office open** 9:15am – 6pm
Mondays – Fridays (closed Bank Holidays, 24 – 28 and 31 December).

Please note the course / workshop fee must be paid in full at the time of booking. Basic materials are provided but there may be some additional costs on certain practical courses.

Booking policy

Bookings are dealt with on a first-come, first-served basis and only on receipt of the full fee. Some of our courses / workshops are extremely popular and sell out quickly, so you are advised to book early. If the course / workshop you want is fully subscribed, your name can be added to a waiting list for cancellations. All bookings sent in advance by post will be treated equally regardless of the date we receive them, and opened on the day when bookings open (**Monday 16 July**) in no particular order of priority.

Age guidance

Generally our courses / workshops are most suited to those aged 16+ years, unless otherwise stated. Younger people may be able to attend at the discretion of the tutor. Please contact us to discuss.

Cancellations

Occasionally some of our courses / workshops are cancelled due to low numbers. If this happens, you will be given a full refund. Wherever possible, we aim to let you know of a cancellation at least one week before the course / workshop starts. Details of our booking and cancellation policy are on our website at www.embracearts.co.uk.

Concessions

We offer concessions to:

- people on income-related benefits such as job seeker's allowance, disabled person's tax credit and pensions credit guarantee;
- those on non-income related benefits such as disability living allowance, severe disability living allowance and incapacity benefit;
- unwaged dependents of those in receipt of certain concessions; and
- learners in full-time education.

Full details are on our website at www.embracearts.co.uk. When booking, please let us know which concession you are claiming and provide proof of entitlement.

Refunds

We hope that you won't need to, but if you are thinking about withdrawing from your course or workshop, please contact us to talk through your options.

You may be entitled to a refund or credit. You will need to contact us in writing or by e-mail to confirm your withdrawal.

A 5% fixed administration charge will apply to all refunds.

How to find us



Buses:

Numbers 47, 80 / 80a
(termtime only), 302.

Embrace Arts
Richard Attenborough centre
Lancaster Road
Leicester LE1 7HA

t: 0116 252 2455

e: arts-centre@le.ac.uk

www.embracearts.co.uk



Search for Embrace Arts




@EmbraceArts

RNID Typetalk service:

18001 0116 252 2455



Car parking: After 6pm and at weekends – **free** at the Medical Sciences Building next door. Weekdays – pay and display on Lancaster Road and in Victoria Park (De Montfort Hall, entrance on Granville Road).  Four spaces at Embrace Arts.

Cycle parking: at Embrace Arts and in front of the Medical Sciences Building.

If you need help in understanding this information, require a copy in Braille, larger print, on CD or audiotape, or would like a translator, please contact us. Access and inclusion are at the heart of our philosophy and we aim to provide a friendly, creative environment where disabled users can engage fully with all our activities. Embrace Arts is purpose built to enable access for everyone regardless of physical needs. While we are not able to provide all levels of support, we give free places to personal assistants of disabled learners attending courses.



Embrace Arts is the University
of Leicester's arts centre and
part of the Institute of
Lifelong Learning.

© University of Leicester ·
June 2012



Supported using public funding by
**ARTS COUNCIL
ENGLAND**

